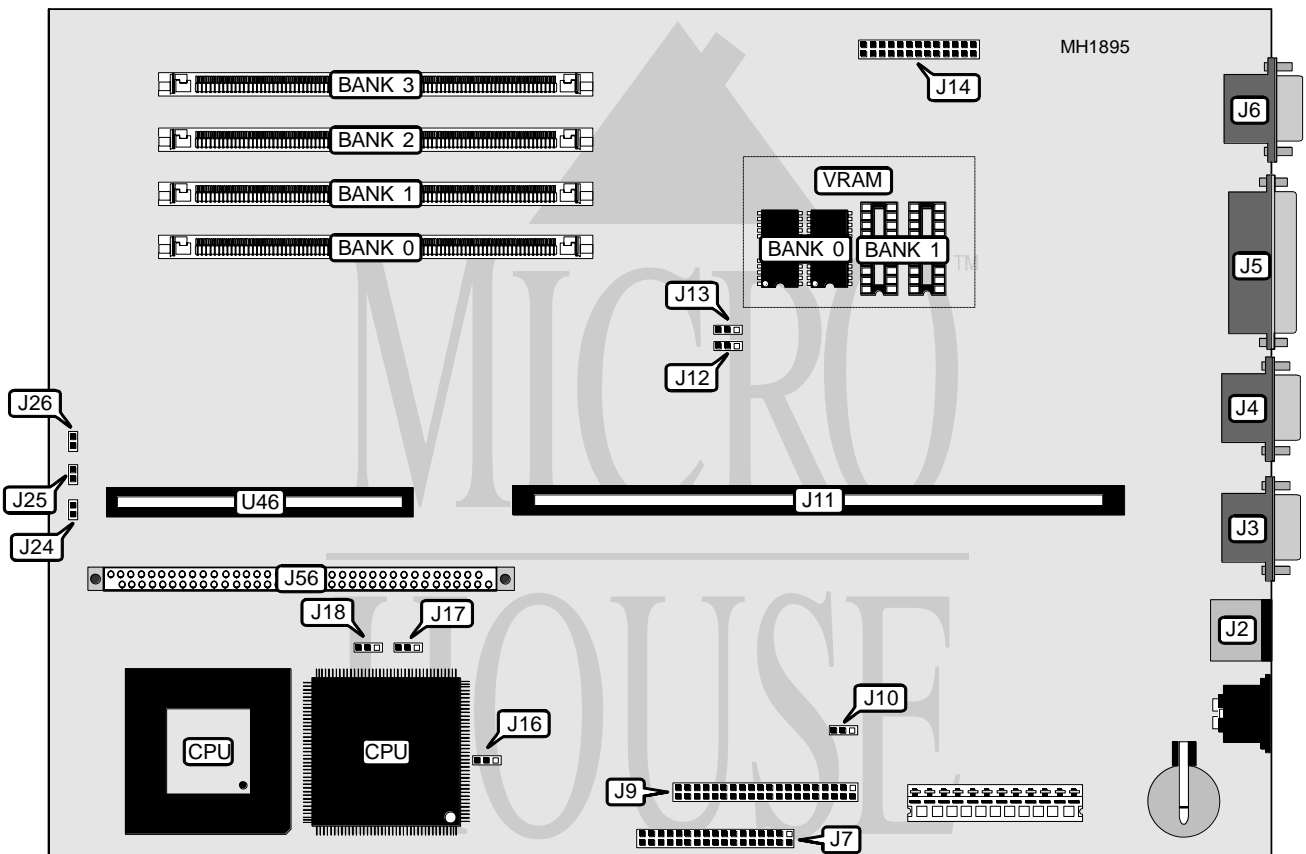


# IBM CORPORATION PS/VALUEPOINT 6384/D, 6387/T (TYPE 2)

**Processor** 80486SX/80486DX/80486DX2  
**Processor Speed** 25/33/50(internal)/66(internal)MHz  
**Chip Set** Intel  
**Max. Onboard DRAM** 64MB  
**Cache** 128/256KB (located on external cache card)  
**BIOS** IBM  
**Dimensions** 330mm x 218mm  
**I/O Options** 32-bit riser card slot, external cache card, floppy drive interface, hard drive interface, parallel port, PS/2 mouse port, serial ports (2), video port  
**NPU Options** None



CONNECTIONS			
Purpose	Location	Purpose	Location
PS/2 mouse port	J2	Riser Card	J11
Serial port 1	J3	Power LED	J24
Serial port 2	J4	Hard drive interface LED	J25
Parallel port	J5	Speaker	J26
Video port	J6	External cache card slot	U56
Floppy drive interface	J7	Riser card extension slot	U49
Hard drive interface	J9		

Continued next page...

# IBM CORPORATION

## PS/VALUEPOINT 6384/D, 6387/T (TYPE 2)

... continued from previous page.

USER CONFIGURABLE SETTINGS		
Function	Jumper	Position
í Factory configured - do not alter	J10	pins 1 & 2 closed
í Monochrome adapter not installed	J12	pins 1 & 2 closed
Monochrome adapter installed	J12	pins 2 & 3 closed
í Video port enabled	J13	pins 1 & 2 closed
í Video port disabled	J13	pins 2 & 3 closed
í CMOS memory normal operation	J15	pins 1 & 2 closed
CMOS memory clear	J15	pins 2 & 3 closed
í Write protect disabled	J16	pins 1 & 2 closed
Write protect enabled	J16	pins 2 & 3 closed

DRAM CONFIGURATION				
Size	Bank 0	Bank 1	Bank 2	Bank 3
16MB	(1) 2M x 36	(1) 2M x 36	NONE	NONE
32MB	(1) 2M x 36	(1) 2M x 36	(1) 2M x 36	(1) 2M x 36
32MB	(1) 4M x 36	(1) 4M x 36	NONE	NONE
64MB	(1) 4M x 36	(1) 4M x 36	(1) 4M x 36	(1) 4M x 36
64MB	(1) 8M x 36	(1) 8M x 36	NONE	NONE

VIDEO MEMORY CONFIGURATION		
Size	Bank 0	Bank 1
1MB	(2) 512K x 8	None
2MB	(2) 512K x 8	(2) 512K x 8

CPU TYPE CONFIGURATION		
Type	J17	J18
80486SX	pins 1 & 2 closed	pins 1 & 2 closed
80486DX	pins 2 & 3 closed	pins 2 & 3 closed
80486DX2	pins 2 & 3 closed	pins 2 & 3 closed

Note: 80486SX is only supported by model 6384/D.