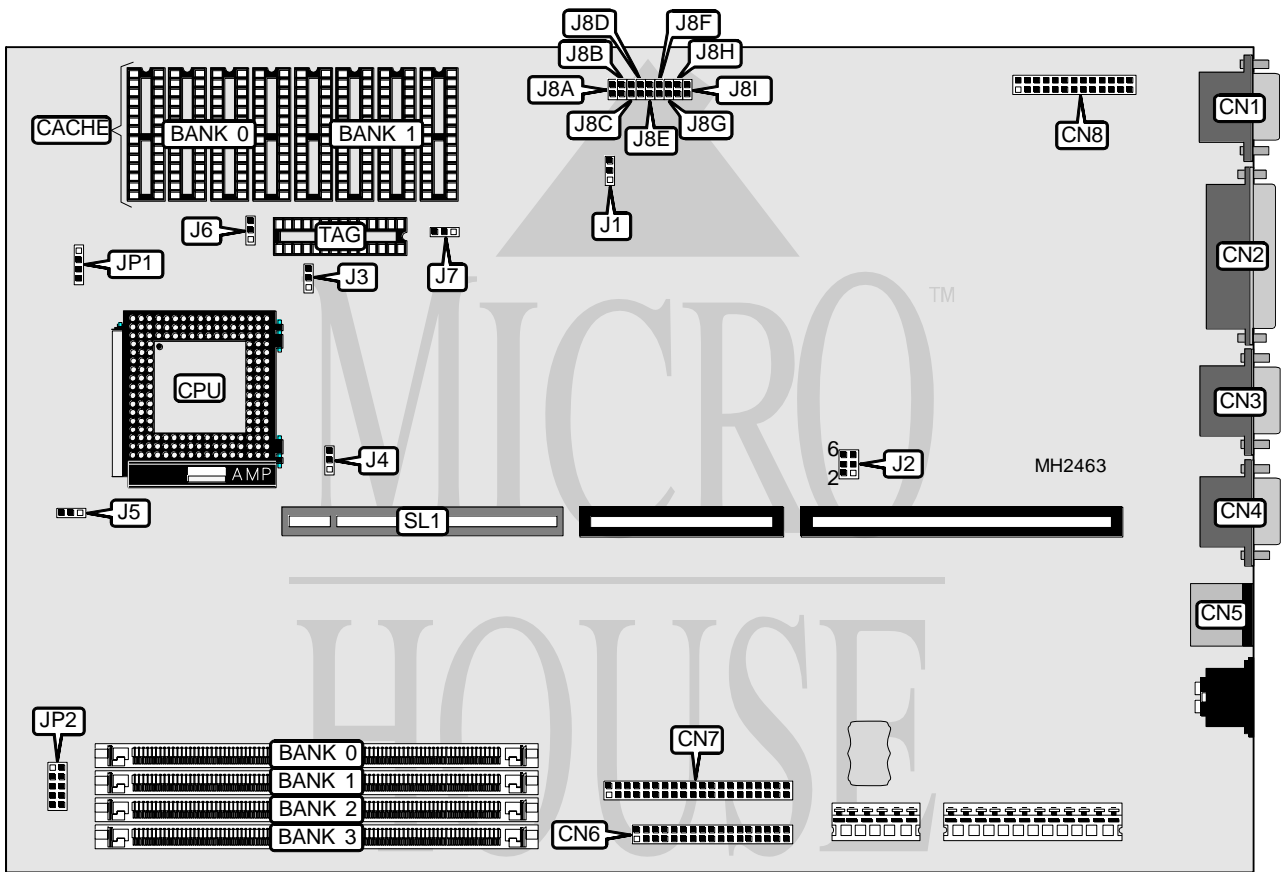


# SIEMENS NIXDORF INFORMATIONSSYSTEME AG

## S 2 6 3 6 1 - D 8 1 9

<b>Processor</b>	80486SX/80486DX/ODP486SX/80486DX2/80486DX4/Pentium Overdrive
<b>Processor Speed</b>	25/33/50(internal)/66(internal)/75(internal)/100(internal)MHz
<b>Chip Set</b>	Unidentified
<b>Max. Onboard DRAM</b>	64MB
<b>Cache</b>	128/256KB
<b>BIOS</b>	Unidentified
<b>Dimensions</b>	330mm x 218mm
<b>I/O Options</b>	32-bit VESA local bus slots (1), floppy drive interface, IDE interface, parallel port, PS/2 mouse port, serial ports (2), VGA feature connector, VGA port
<b>NPU Options</b>	None



CONNECTIONS			
Purpose	Location	Purpose	Location
VGA port	CN1	IDE interface	CN7
Parallel port	CN2	VGA feature connector	CN8
Serial port 2	CN3	Speaker	JP1
Serial port 1	CN4	LED connector	JP2
PS/2 mouse port	CN5	32-bit VESA local bus slot	SL1
Floppy drive interface	CN6		

Continued on next page. . .

# SIEMENS NIXDORF INFORMATIONSSYSTEME AG

## S 2 6 3 6 1 - D 8 1 9

... continued from previous page

USER CONFIGURABLE SETTINGS		
Function	Jumper	Position
í VGA feature connector disabled	J1	pins 1 & 2 closed
VGA feature connector enabled	J1	pins 2 & 3 closed
í IRQ9 type select VGA controller only	J2	pins 1 & 2 closed
IRQ9 type select other uses	J2	pins 2 & 3 closed
í IRQ12 type select mouse only	J2	pins 4 & 5 closed
IRQ12 type select other uses	J2	pins 5 & 6 closed
í Cache type select write back	J4	pins 1 & 2 closed
Cache type select write through	J4	pins 2 & 3 closed
í Password enabled	J8A	Closed
Password disabled	J8A	Open
í Factory configured - do not alter	J8B	Closed
í Monitor type select monochrome	J8D	Open
Monitor type select color	J8D	Closed
í Factory configured - do not alter	J8E	Open
í Flash BIOS write protect enabled	J8F	Closed
Flash BIOS write protect disabled	J8F	Open
í Floppy drive interface enabled	J8G	Closed
Floppy drive interface disabled	J8G	Open
í IDE interface enabled	J8H	Closed
IDE interface disabled	J8H	Open
í On board VGA controller enabled	J8I	Closed
On board VGA controller disabled	J8I	Open

DRAM CONFIGURATION				
Size	Bank 0	Bank 1	Bank 2	Bank 3
4MB	(1) 1M x 36	NONE	NONE	NONE
8MB	(1) 1M x 36	(1) 1M x 36	NONE	NONE
8MB	(1) 2M x 36	NONE	NONE	NONE
12MB	(1) 1M x 36	(1) 1M x 36	(1) 1M x 36	NONE
12MB	(1) 2M x 36	(1) 1M x 36	NONE	NONE
16MB	(1) 1M x 36	(1) 1M x 36	(1) 1M x 36	(1) 1M x 36
16MB	(1) 2M x 36	(1) 2M x 36	NONE	NONE
16MB	(1) 2M x 36	(1) 1M x 36	(1) 1M x 36	NONE
16MB	(1) 4M x 36	NONE	NONE	NONE
20MB	(1) 2M x 36	(1) 1M x 36	(1) 1M x 36	(1) 1M x 36
20MB	(1) 2M x 36	(1) 2M x 36	(1) 1M x 36	NONE
20MB	(1) 4M x 36	(1) 1M x 36	NONE	NONE
24MB	(1) 2M x 36	(1) 2M x 36	(1) 2M x 36	NONE
24MB	(1) 2M x 36	(1) 2M x 36	(1) 1M x 36	(1) 1M x 36
24MB	(1) 2M x 36	(1) 2M x 36	(1) 2M x 36	NONE
24MB	(1) 4M x 36	(1) 1M x 36	(1) 1M x 36	NONE
28MB	(1) 2M x 36	(1) 2M x 36	(1) 2M x 36	(1) 1M x 36
28MB	(1) 4M x 36	(1) 1M x 36	(1) 1M x 36	(1) 1M x 36

Continued on next page. . .

# SIEMENS NIXDORF INFORMATIONSSYSTEME AG

## S 2 6 3 6 1 - D 8 1 9

... continued from previous page

DRAM CONFIGURATION (CON'T)				
Size	Bank 0	Bank 1	Bank 2	Bank 3
28MB	(1) 4M x 36	(1) 2M x 36	(1) 1M x 36	NONE
32MB	(1) 4M x 36	(1) 4M x 36	NONE	NONE
32MB	(1) 4M x 36	(1) 2M x 36	(1) 1M x 36	(1) 1M x 36
32MB	(1) 4M x 36	(1) 2M x 36	(1) 2M x 36	NONE
32MB	(1) 8M x 36	NONE	NONE	NONE
36MB	(1) 4M x 36	(1) 2M x 36	(1) 2M x 36	(1) 1M x 36
36MB	(1) 8M x 36	(1) 1M x 36	NONE	NONE
48MB	(1) 8M x 36	(1) 2M x 36	(1) 1M x 36	(1) 1M x 36
40MB	(1) 8M x 36	(1) 1M x 36	(1) 1M x 36	NONE
44MB	(1) 8M x 36	(1) 1M x 36	(1) 1M x 36	(1) 1M x 36
44MB	(1) 8M x 36	(1) 2M x 36	(1) 1M x 36	NONE
48MB	(1) 4M x 36	(1) 4M x 36	(1) 4M x 36	NONE
48MB	(1) 8M x 36	(1) 2M x 36	(1) 2M x 36	NONE
52MB	(1) 8M x 36	(1) 2M x 36	(1) 2M x 36	(1) 1M x 36
64MB	(1) 4M x 36	(1) 4M x 36	(1) 4M x 36	(1) 4M x 36
64MB	(1) 8M x 36	(1) 8M x 36	NONE	NONE

CACHE CONFIGURATION			
Size	Bank 0	Bank 1	TAG
128KB	(4) 32K x 8	NONE	(1) 8K x 8
256KB	(4) 32K x 8	(4) 32K x 8	(1) 32K x 8

CACHE JUMPER CONFIGURATION		
Size	J6	J7
128KB	pins 2 & 3 closed	pins 2 & 3 closed
256KB	pins 1 & 2 closed	pins 1 & 2 closed

CPU TYPE CONFIGURATION	
Type	J3
80486SX	pins 1 & 2 closed
ODP486SX	pins 1 & 2 closed
80486DX	pins 2 & 3 closed
80486DX2	pins 2 & 3 closed
80486DX4	pins 2 & 3 closed
Pentium Overdrive	pins 2 & 3 closed

CPU SPEED CONFIGURATION	
Speed	J8C
25MHz	Open
33MHz	Closed
50iMHz	Open
66iMHz	Closed
75iMHz	Open
100iMHz	Closed

Continued on next page. . .

# SIEMENS NIXDORF INFORMATIONSSYSTEME AG

## S 2 6 3 6 1 - D 8 1 9

... continued from previous page

CPU VOLTAGE CONFIGURATION	
Voltage	J5
3.3v	pins 2 & 3 closed
5v	pins 1 & 2 closed